

A water-dispersible granule formulation containing 50% w/w triflurosulfuron-methyl, a sulfonylurea, for the control of broad-leaved weeds in sugar beet and fodder beet.

The (COSHH) Control of Substances Hazardous to Health Regulations may apply to the use of this product at work.

Manufactured in France

PROTECT FROM FROST

Du Pont (UK) Limited,
Agricultural Products,
Wedgwood Way, STEVENAGE,
Herts. SG1 4QN
Tel: 01438 734450
Emergency 24 hr Contact:
02871 861313

® Registered trademark of
 E. I. du Pont de Nemours and Company

120 g e

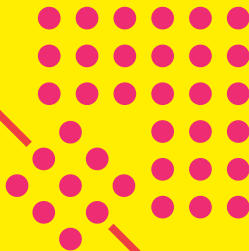
Herbicide

DU PONT®

Debut®

Only by DuPont

MAFF 07804



**DANGEROUS
 FOR THE
 ENVIRONMENT**

DEBUT®

**VERY TOXIC
 TO AQUATIC
 ORGANISMS,
 MAY CAUSE
 LONG-TERM
 ADVERSE
 EFFECTS IN
 THE AQUATIC
 ENVIRONMENT**

This material and its container must be disposed of in a safe way
 Use appropriate containment to avoid environmental contamination

To avoid risks to man and the environment, comply with the instructions for use.

K-03530/30402 - UK

P. 151

P. 185

P. 213

P. YELLOW

BLACK

SAFETY PRECAUTIONS

Operator protection

- * Engineering control of operator exposure must be used where reasonably practicable in addition to the following personal protective equipment:
- * **WEAR SUITABLE PROTECTIVE** gloves when handling the concentrate.
- * **WEAR SUITABLE PROTECTIVE** gloves when handling contaminated surfaces.
- * However, engineering controls may replace personal protective equipment if a COSHH assessment shows they provide an equal or higher standard of protection.

WASH CONCENTRATE from skin or eyes immediately

DO NOT BREATHE SPRAY

WASH HANDS AND EXPOSED SKIN before meals and after work

WHEN USING DO NOT EAT, DRINK OR SMOKE

Environmental protection

- * Since this product is **EXTREMELY DANGEROUS** to fish and other aquatic life, surface waters or ditches must not be contaminated with chemical or used container.
- * **DO NOT ALLOW DIRECT SPRAY** from horizontal boom sprayers to fall within 5m of the top of the bank of a static or flowing waterbody, unless a Local Environmental Risk Assessment for Pesticides (LERAP) permits a narrower buffer zone, or within 1m of the top of a ditch which is dry at the time of application. **DO NOT ALLOW DIRECT SPRAY** from hand-held sprayers to fall within 1 m of the top of a bank of a static or flowing waterbody. Aim spray away from water.
- * This product qualifies for inclusion within the Local Environmental Risk Assessment for Pesticides (LERAP) scheme. Before each spraying operation from a horizontal boom sprayer, either a LERAP must be carried out in accordance with PSD's published guidance or the statutory buffer zone must be maintained. The results of the LERAP must be recorded and kept available for three years.

Storage and disposal

KEEP IN ORIGINAL CONTAINER, tightly closed, in a safe place

EMPTY CONTAINER COMPLETELY and dispose of safely

KEEP AWAY FROM FOOD, DRINK AND ANIMAL FEEDING STUFFS

KEEP OUT OF REACH OF CHILDREN

DIRECTIONS FOR USE

IMPORTANT: This information is approved as part of the Product Label. All instructions within this section must be read carefully in order to obtain safe and successful use of this product.

RESTRICTIONS

- DEBUT® must not be applied to any crop suffering from stress as a result of drought, water-logging, low

temperatures, pest or disease attack, nutrient or lime deficiency or other factors reducing crop growth.

- Due to the high level of activity of the herbicide, **special care must be taken to avoid damage by drift onto plants outside the target area, or onto surface waters or ditches. Thorough cleansing of equipment is also very important** - see below.
- Apply no more than four times to any sugar beet or fodder beet crop.
- **Following Crops** - After applying DEBUT® to a beet crop, only winter cereals should be sown in the same calendar year. Any crop may be sown or planted in the following spring (next calendar year) after a beet crop treated with DEBUT®.
- **Crop Failure** - In the event of crop failure for any reason, sow only spring barley, linseed or beet within four months of application of DEBUT®, provided this agrees with the recommendations of any partner product. After four months from application, refer to "Following Crops" section.

WEED CONTROL

DEBUT® works mainly by foliar action. Tank-mixed with a herbicide partner it controls a wide range of broad-leaved weeds. It is most effective if applied when the weeds are small and actively growing. Good spray cover of weeds must be obtained.

Susceptible plants cease growth almost immediately after application and symptoms can be seen about 5 to 10 days after application. Best results are achieved when DEBUT® plus approved tank-mix partner are applied in a programme of up to four sequential sprays.

It is important to identify the weeds occurring in the crop and refer to the weed table to ensure that the weeds present are those susceptible to DEBUT® plus appropriate tank-mix partner.

The susceptibility ratings of weeds in the following table refer to good spray cover and good growing conditions, with weed size of up to 2 true leaves.

WEED SUSCEPTIBILITY TABLE

Weed Species	DEBUT® + 1.5 L/ha phenmedipham	DEBUT® + 1.5 L/ha phenmedipham + 0.5 kg/ha metamitron	DEBUT® + 1 L/ha desmedipham/ ethofumesate/ phenmedipham
Black-bindweed	S	S	S
Charlock	S	S	S
Chickweed	S	S	S
Cleavers	S	S	S
Fat-hen	S	S	S
Field Pansy	MS ⁽¹⁾	S	S
Fool's Parsley	S	S	S
Fumitory	S	S	S ⁽²⁾
Knotgrass	S	S	S
Mayweed, Scentless	S	S	S
Red Dead-nettle	S	S	S
Redshank	S	S	S
Small Nettle	S	S	S
Volunteer Oilseed Rape	S	S	S

S = Fully susceptible MS = Moderately susceptible

(1) For control of field pansy, increase the dose rate of phenmedipham to 2 L/ha

(2) For control of listed weeds other than fumitory, a dose rate of 0.5 L/ha of desmedipham/ethofumesate/phenmedipham can be used

WEED RESISTANCE

When herbicides with the same mode of action are used repeatedly over several years in the same field, selection of resistant biotypes can take place. These can propagate and may become dominating. A weed species is considered resistant to a herbicide if it survives a correctly-applied treatment at the recommended dose. Development of resistance within a weed species can be avoided or delayed by alternating (or tank-mixing) with suitable products having a different mode of action.

CROP

DEBUT® can be used on all varieties of sugar beet and fodder beet at the growth stages given below.

TIMING

The first application should be made in the spring when the first weeds have emerged. Subsequent applications should be made every 5 - 14 days when new flushes of weeds are at or just past the cotyledon stage. Do not apply DEBUT® after the leaves of the crop have met

between the rows. Do not apply DEBUT® more than four times to any beet crop.

DEBUT® mixtures can be applied from the early cotyledon stage of sugar beet or fodder beet as part of a planned programme following pre-emergence application of approved metamitron or chloridazon-based products at commercially recommended doses.

SOIL

DEBUT® can be used on all soil types. Weed control may be reduced when soil conditions are very dry.

WEATHER

Avoid high light intensity (full sunlight) and high temperatures (above 21°C) on the day of spraying. Avoid periods of substantial day to night temperature changes or when frost is expected.

DOSE

DEBUT® should be applied at 30 g/ha in conjunction with a recommended adjuvant or suitable herbicide tank-mix partner(s) (see WEED SUSCEPTIBILITY TABLE).

VOLUME AND APPLICATION

BEFORE USING DEBUT[®], SPRAYING EQUIPMENT MUST BE CLEAN AND FREE FROM CONTAMINATION WITH OTHER PESTICIDES.

OVERALL APPLICATION

DEBUT[®] should be applied overall in 80 - 150 litres of water per hectare, using suitable equipment to give a FINE spray, as defined by BCPC. Good, even spray cover of the weeds is essential for best results.

When applying DEBUT[®], care should be taken not to overlap spray swaths.

BAND APPLICATION

Similar doses, water volumes and spray quality should be used as in overall application, but the area covered will be dependent upon the row spacing and band width. Careful calibration is essential to achieve best results.

MIXING

DEBUT[®] mixes easily with water, but the following mixing procedure should be followed: Quarter fill the spray tank

with water and start the agitation. Add the required quantity of DEBUT[®] directly to the tank, or via an induction bowl when fitted, without prior creaming. Continue agitation while topping up the tank and while spraying. Use the tank the same day as mixing. For mixing instructions with phenmedipham as a tank-mix partner, see "COMPATIBILITY" section.

COMPATIBILITY

In any tank-mix, with the exception of phenmedipham, add DEBUT[®] to the spray tank first and ensure it is fully dispersed before adding the partner product(s). If a partner product contains phenmedipham, follow the manufacturer's recommendations for mixing that product before adding DEBUT[®].

To widen the spectrum of activity, DEBUT[®] should be tank-mixed with other herbicides. DEBUT[®] can be tank-mixed with VENZAR[®] FLOWABLE, approved formulations of phenmedipham containing 114 g/L, metamitron or products containing 15.4 g/L desmedipham, 61.4 g/L phenmedipham

plus 128 g/L ethofumesate. Products should only be tank-mixed if each product can be applied within the manufacturer's label recommendation for its use.

When DEBUT® tank-mixes are used in sequence with graminicides, the minimum time interval should be observed between applications in accordance with the manufacturer's recommendations.

Do not apply DEBUT® in sequence or in tank-mix with a product containing any other sulfonylurea.

For tank-mix additional compatibility information, please consult the DuPont compatibilities product manual insert.

WARNING

EXTREME CARE SHOULD BE TAKEN TO AVOID DAMAGE BY DRIFT OF SPRAY ONTO PLANTS OUTSIDE THE TARGET AREA OR ONTO SURFACE WATERS OR DITCHES. SPRAYING EQUIPMENT SHOULD NOT BE DRAINED OR FLUSHED ONTO LAND PLANTED WITH OR INTENDED FOR PLANTING WITH

TREES OR CROPS OTHER THAN SUGAR BEET OR FODDER BEET.

SPRAY TANK CLEAN-OUT

TO AVOID SUBSEQUENT DAMAGE TO CROPS OTHER THAN SUGAR BEET OR FODDER BEET, IMMEDIATELY AFTER SPRAYING DEBUT® THOROUGHLY CLEAN ALL SPRAY EQUIPMENT INCLUDING INSIDE AND OUTSIDE OF LID USING ALL CLEAR® EXTRA SPRAYER CLEANER ACCORDING TO THE LABEL INSTRUCTIONS.

ALTERNATIVELY USE THE FOLLOWING PROCEDURE:

1. Immediately after spraying, drain tank completely. Any contamination on the outside of the spraying equipment should be removed by washing with clean water.
2. Rinse inside of tank with clean water and flush through boom and hoses using at least one-tenth of the spray tank volume. Drain tank completely.

3. Half fill tank with clean water and add 1/3 litre household ammonia (contains 9.5% ammonia) for each 100 litres of tank volume. (Equivalent amounts of alternate strength ammonia solutions can be used providing the final concentration in the full tank is 0.03%). Agitate and then flush the boom and hoses with the cleaning solution. Top up with water making sure the tank is completely full and allow to stand for 15 minutes with agitation. Again flush the boom and hoses and drain tank completely.
4. Nozzles and filters should be removed and cleaned separately with ammonia solution at the same concentration as used for the sprayer.
5. Rinse the tank with clean water and flush through the boom and hoses using at least one-tenth of the spray tank volume. Drain tank completely.
6. For disposal of washings, follow the Green Code - Code of Practice for the Safe Use of Pesticides on Farms and Holdings (MAFF Publications, 1998). Do not spray onto sensitive crop or land intended for cropping with sensitive crop.

NOTE:

- If it is not possible to drain the tank completely, step 3 must be repeated before going on to step 4.
- Follow washout instructions and only use recommended tank-mixtures.
- Failure to thoroughly clean your sprayer after use can result in damage to sensitive crops sprayed later.
- DEBUT® is non-corrosive to equipment, non-flammable and non-volatile.

® ALL CLEAR is a trademark and VENZAR is a registered trademark of E. I. du Pont de Nemours and Company.

NOTICE TO BUYER

All goods supplied by us are of a high grade and we believe them to be suitable for any purpose for which we expressly supply them, but as we cannot exercise control over their mixing or use, all conditions and warranties, statutory or otherwise, as to the quality or fitness for any purpose of our goods are excluded and no responsibility will be accepted by us for any damage or injury whatsoever arising from their storage, handling, application or use.

**COMPLIANCE WITH THE FOLLOWING
CONDITIONS OF USE AND ALL SAFETY
PRECAUTIONS MARKED * IS A LEGAL
REQUIREMENT**

**FOR USE ONLY AS AN AGRICULTURAL
HERBICIDE**

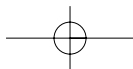
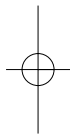
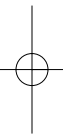
Crops: For use on sugar beet and fodder beet

Maximum individual dose: 30 grams product per hectare

Maximum number of treatments: Four per crop

Latest time of application: Before the leaves of the crop meet between the rows

**READ ALL OTHER SAFETY PRECAUTIONS AND
DIRECTIONS FOR USE BEFORE USE**



BLACK




OPEN HERE

A water-dispersible granule formulation containing 50% w/w triflurosulfuron-methyl, a sulfonylurea, for the control of broad-leaved weeds in sugar beet and fodder beet.

The (COSHH) Control of Substances Hazardous to Health Regulations may apply to the use of this product at work.

Manufactured in France
PROTECT FROM FROST

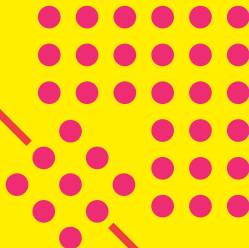
Du Pont (UK) Limited,
Agricultural Products,
Wedgwood Way, STEVENAGE,
Herts. SG1 4QN
Tel: 01438 734450
Emergency 24 hr Contact:
02871 861313

© Registered trademark of
E. I. du Pont de Nemours and Company

120 g e
Herbicide

Debut®
Only by DuPont
MAFF 07804

K-03530/30402 - UK


**DANGEROUS
FOR THE
ENVIRONMENT**
DEBUT®
**VERY TOXIC
TO AQUATIC
ORGANISMS,
MAY CAUSE
LONG-TERM
ADVERSE
EFFECTS IN
THE AQUATIC
ENVIRONMENT**

This material and its container must be disposed of in a safe way
Use appropriate containment to avoid environmental contamination

To avoid risks to man and the environment, comply with the instructions for use.

Batch Nr:

P. 151

P. 185

P. 213

P. YELLOW

BLACK