

VOILET INTERNE RECTO

FACE CACHÉE RECTO

FACE PRINCIPALE RECTO

VOILET PRINCIPAL RECTO

\*\* CAPITAN 40 tank-mixed with a morpholine\*\*\* fungicide gives enhanced control of rusts during periods of high infection pressure when applied according to the manufacturer's recommendations.

\*\*\* Morpholine fungicides contain fenpropimorph, fenpropidin or tridemorph. For compatible products or formulations see below.

**Weather**  
Rain occurring within two hours of application may reduce the effectiveness of the treatment.

**Dose**

- For control of Mildew\*, *Septoria*, *Rhynchosporium*, Net blotch, Yellow rust\*\* and Brown rust\*\* apply CAPITAN 40 at 0.4 L/ha.
- For a useful level of control of eyespot in addition to the above diseases, apply a single spray of CAPITAN 40 at 0.5 L/ha. This rate must not be used more than once in any crop.

**Volume and Application**  
CAPITAN 40 must be applied in 200 litres of water/ha using spraying equipment to give good even coverage of the crop.

**Mixing**  
CAPITAN 40 MUST BE SHAKEN WELL BEFORE USE. CAPITAN 40 mixes easily with water and should be added directly to the spray tank during filling. Wash out container and add washings to the spray tank. Continue agitation during filling and when spraying.

**Compatibility**  
For use on wheat and barley, CAPITAN 40 can be tank-mixed with the following, if applied within the manufacturer's label recommendations:

**Herbicides:** ALLY®

**Fungicides** - approved formulations of fenpropidin (M08660), fenpropimorph (M00578) and chlorothalonil (M10518).

**Growth Regulators** - approved salt formulations containing only chlormequat ± choline chloride. For additional compatibility information please consult the DuPont compatibilities product manual insert.

© ALLY is a registered trademark of E.I. du Pont de Nemours and Company

**OILSEED RAPE**

**Disease Control**  
CAPITAN 40 controls light leaf spot.

**Crop Safety**  
CAPITAN 40 can be used on all varieties of oilseed rape.

**Timing and Dose**  
Apply a single spray of 0.5 litres/hectare at the stem extension stage of the crop. Alternatively, apply a sequential spray of 0.25 litres/hectare in the autumn and repeat at the stem extension growth stage. CAPITAN 40 can be applied in the autumn or spring up to "before first flower opened" stage of crop growth (GS 4.0).

**Volume and Application**  
CAPITAN 40 must be applied in 200 litres of water/ha using spraying equipment to give good even coverage of the crop.

**Mixing**  
CAPITAN 40 MUST BE SHAKEN WELL BEFORE USE.

CAPITAN 40 mixes easily with water and should be added directly to the spray tank during filling. Wash out container and add washings to the spray tank. Continue agitation during filling and when spraying.

**NOTICE TO BUYER**

All goods supplied by us are of a high grade and we believe them to be suitable for any purpose for which we expressly supply them, but as we cannot exercise control over their mixing or use, all conditions and warranties, statutory or otherwise, as to the quality or fitness for any purpose of our goods are excluded, and no responsibility will be accepted by us for any damage or injury whatsoever arising from their storage, handling, application or use.

All manufacturers trademarks are duly acknowledged.

**Capitan® 40**

**MAPP 10914**

An emulsifiable concentrate containing 400 g/litre (37.9% w/w) flusilazole for use as a systemic fungicide for broad-spectrum disease control in winter wheat, winter barley and spring barley, and for control of light leaf spot in oilseed rape.

The (COSHH) Control of Substances Hazardous to Health Regulations may apply to the use of this product at work.

**SHAKE WELL BEFORE USE. PROTECT FROM FROST**

Manufactured in France

Du Pont (UK) Limited, Agricultural Products, Wedgwood Way, STEVENAGE, Herts. SG1 4QN. - Tel: 01438 734450

**Emergency 24-hour contact: Tel: (02871) 861313**

K-04881/30402 - UK

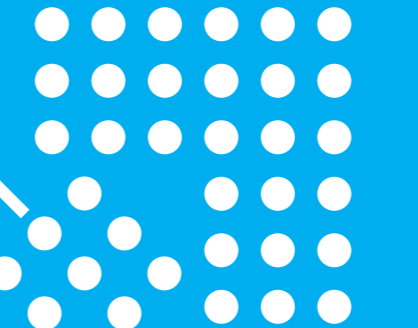
Batch N°: See top of pack

**Contents: 2 L e**  
**Fungicide**



**Capitan® 40**  
Only by DuPont

© Registered trademark of E. I. du Pont de Nemours and Company



**COMPLIANCE WITH THE FOLLOWING CONDITIONS OF USE AND ALL SAFETY PRECAUTIONS MARKED \* IS A LEGAL REQUIREMENT FOR USE ONLY AS AN AGRICULTURAL FUNGICIDE**

Crops	Maximum individual dose (litres product/ha)	Maximum total dose (litres product/ha)	Latest time of application
Winter wheat	(i) 0.5 and/or (ii) 0.4	1.3 - See other specific restriction*	Before third node detectable stage Before early milk stage
Winter barley, spring barley	(i) 0.5 and/or (ii) 0.4	0.9 - See other specific restriction*	Before third node detectable stage Before early milk stage
Oilseed Rape	(i) 0.5 or (ii) 0.25	(i) 0.5 (ii) 0.5	Before first flowers opened stage or Before first flowers opened stage

**OTHER SPECIFIC RESTRICTIONS:**  
\* Before third node detectable stage, the maximum total dose applied must not exceed 0.5L product/ha.

**READ ALL OTHER SAFETY PRECAUTIONS AND DIRECTIONS FOR USE BEFORE USE**



**TOXIC**



**DANGEROUS FOR THE ENVIRONMENT**

**CAPITAN® 40**

**HARMFUL IF SWALLOWED**  
**LIMITED EVIDENCE OF A CARCINOGENIC EFFECT**  
**MAY CAUSE HARM TO THE UNBORN CHILD**

**TOXIC TO AQUATIC ORGANISMS, MAY CAUSE LONG-TERM ADVERSE EFFECTS IN THE AQUATIC ENVIRONMENT**

This material and its container must be disposed of in a safe way. Use appropriate containment to avoid environmental contamination. Do not breathe spray. Wear suitable protective clothing and gloves. In case of insufficient ventilation wear suitable respiratory equipment. In case of accident or if you feel unwell seek medical advice immediately (show the label where possible). Avoid exposure - obtain special instructions before use.

**To avoid risks to man and the environment, comply with the instructions for use.**



**OPEN HERE FOR INSTRUCTIONS**

## VOLET PRINCIPAL VERSO

## SAFETY PRECAUTIONS

**Operator protection**

\* Engineering control of operator exposure must be used where reasonably practicable in addition to the following personal protective equipment:

\* WEAR SUITABLE PROTECTIVE GLOVES (BUTYL RUBBER OR NITRILE RUBBER)# AND FACE PROTECTION (FACESHIELD) when handling the concentrate.

\* WEAR SUITABLE PROTECTIVE GLOVES (BUTYL RUBBER OR NITRILE RUBBER)# when maintaining/adjusting equipment.

#at least 0.5 mm thickness

\* However, engineering controls may replace personal protective equipment if a COSHH assessment shows they provide an equal or higher standard of protection

**IN CASE OF CONTACT WITH EYES, RINSE IMMEDIATELY** with plenty of water and seek medical advice

**DO NOT BREATHE SPRAY**

**WHEN USING DO NOT EAT, DRINK OR SMOKE**

**WASH HANDS AND EXPOSED SKIN** before meals and after work

**IF YOU FEEL UNWELL**, seek medical advice (show the label where possible)

**Environmental protection**

\* **HARMFUL TO FISH OR OTHER AQUATIC LIFE.** Do not contaminate surface waters or ditches with chemical or used container

**Storage and disposal**

**KEEP AWAY FROM FOOD, DRINK AND ANIMAL FEEDING STUFFS**

**KEEP OUT OF REACH OF CHILDREN**

**KEEP IN ORIGINAL CONTAINER**, tightly closed, in a safe place

**WASH OUT CONTAINER THOROUGHLY**, empty washings into spray tank and dispose of safely

\* **DO NOT RE-USE CONTAINER** for any purpose

## DIRECTIONS FOR USE

**IMPORTANT:** This information is approved as part of the Product Label. All instructions within this section must be read carefully in order to obtain safe and successful use of this product.

**Restrictions**

- Do not apply the 0.5 litre/ha rate to cereals later than the second node detectable stage of growth
- Do not apply the 0.4 litre/ha rate to cereals later than the grain watery ripe stage of growth.
- Do not apply to oilseed rape later than "before first flowers opened stage"
- Do not apply to crops under stress.
- Do not apply during frosty weather.

**DISEASE RESISTANCE**

When fungicides with the same mode of action are used repeatedly over several years in the same field, naturally occurring less sensitive strains may survive, propagate and become

## VOLET INTERNE VERSO

dominant in that field. A pathogen is considered resistant to a fungicide if it survives a correctly applied treatment at the recommended dose and timing, under normal weather conditions. Development of resistance within a pathogen can be avoided or delayed by alternating or mixing products having a different mode of action.

**CEREALS****Disease Control**

Disease control in cereals can be achieved by a routine programme of preventative spray treatments or by regular monitoring of crops and spraying only when diseases are building up. CAPITAN 40 is suitable for both of these disease control systems due to its broad-spectrum protectant, curative and anti-sporulant activity.

CAPITAN 40 is a broad-spectrum systemic fungicide for the control of a wide range of diseases of wheat and barley. At the higher

rate of application (0.5 L/ha), CAPITAN 40 is active against eyespot, both mbc sensitive and mbc resistant strains. At the normal rate of application (0.4 L/ha), CAPITAN 40 controls *Septoria tritici*, *Septoria nodorum*, *Rhynchosporium*, net blotch, powdery mildew and yellow and brown rusts. Disease control is generally more effective if CAPITAN 40 is applied at an early stage of disease development.

**Crop Safety**

CAPITAN 40 can be used on all varieties of winter wheat, winter barley and spring barley.

**TIMING**

The fungicide can be applied in spring or early summer. CAPITAN 40 at 0.4 L/ha can be applied at any time up to and including the watery ripe stage of grain development. CAPITAN 40 at 0.5 L/ha can be applied once only, up to and including the second node stage of crop growth

**Winter wheat and winter barley:** Best control of eyespot is obtained if CAPITAN 40 is applied in the spring between the growth stages leaf sheaths erect and second node detectable. CAPITAN 40 controls leaf and ear diseases most effectively when diseases are at low levels and before they spread to new growth. Application can be repeated after 3 - 4 weeks with 0.4 L/ha CAPITAN 40, if necessary.

**Spring barley:** Apply CAPITAN 40 when diseases are first evident in the crop and, if necessary, repeat this application 3 - 4 weeks later.

\* To prevent the selection and build-up of resistant strains of mildew, CAPITAN 40 can be tank-mixed with a fungicide of the morpholine\*\*\* group applied according to the manufacturer's recommendations. CAPITAN 40 applied preventatively controls mildew in both wheat and barley, but where mildew has become established then the addition of a morpholine\*\*\* fungicide will improve the control given by CAPITAN 40.